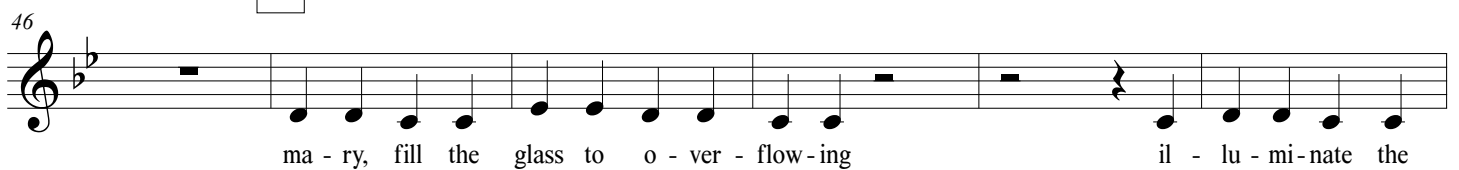
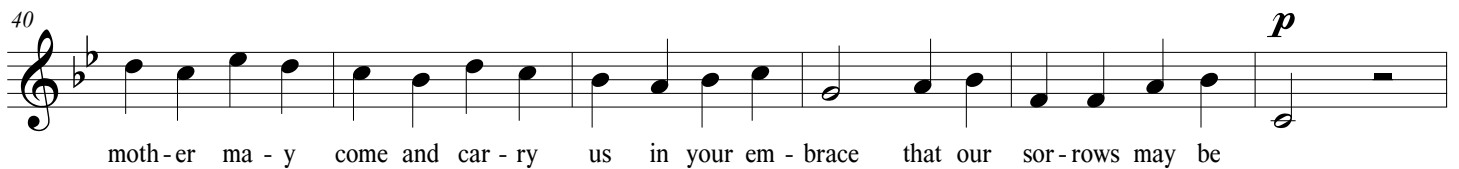
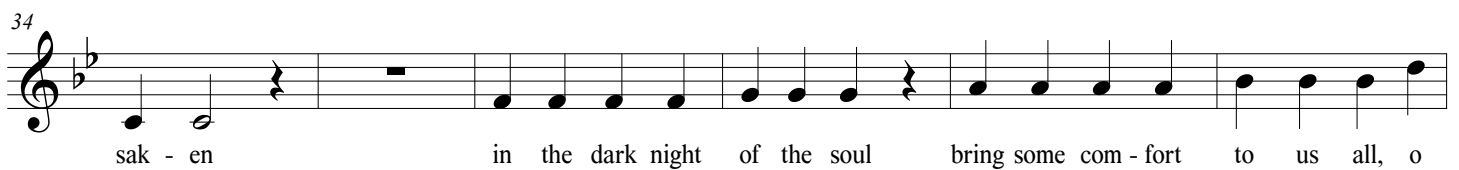
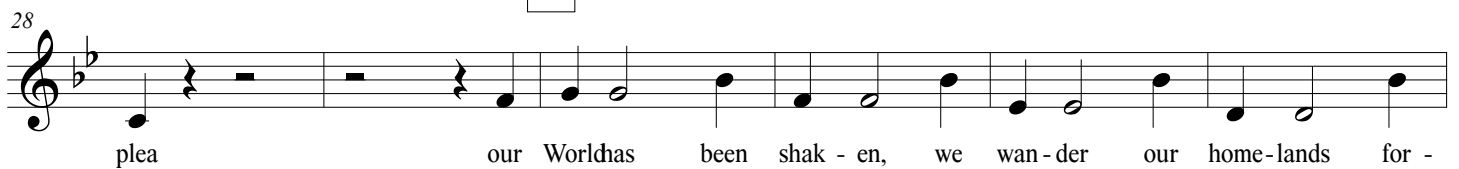
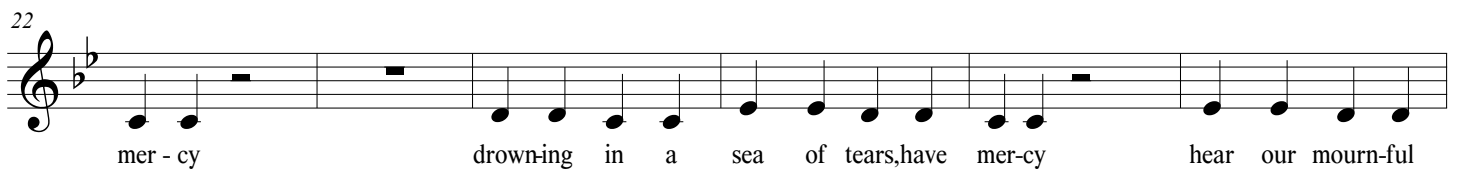
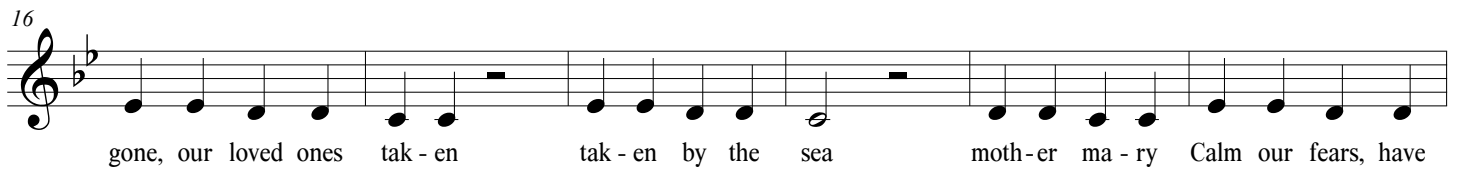
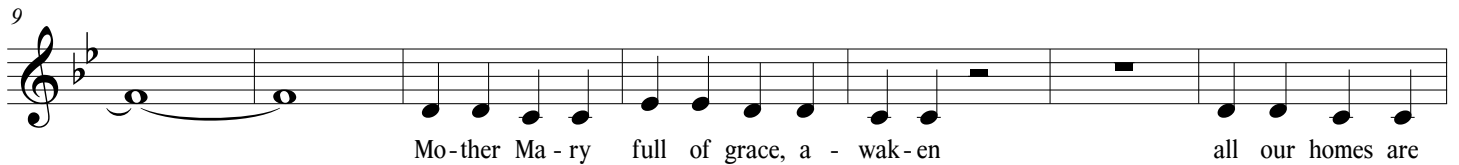


# Requiem

Música: Eliza Gilkyson



52

path where we are go - ing have mer - cy on us all in fu - n'ral fires burn - ing each

58

*crese.*

flame to your mys - t'ry re - turn - ing in the dark night Of the soul your

64

shat - tered dream - ers, fall - en out of grace, lead us to a high - er

C

71

place in the dark night of the soul our bro - ken hearts you can make whole, o

77

***f*** ***mf***

moth - er ma - ry come and car - ry us in your em - brace, - let us see your gen - tle face, ma - ry,

83

***p***

ooh